



A Natural Instinct for Results

CSE: **LECR** | OTC: **LECRF** | FRA: **LGO**

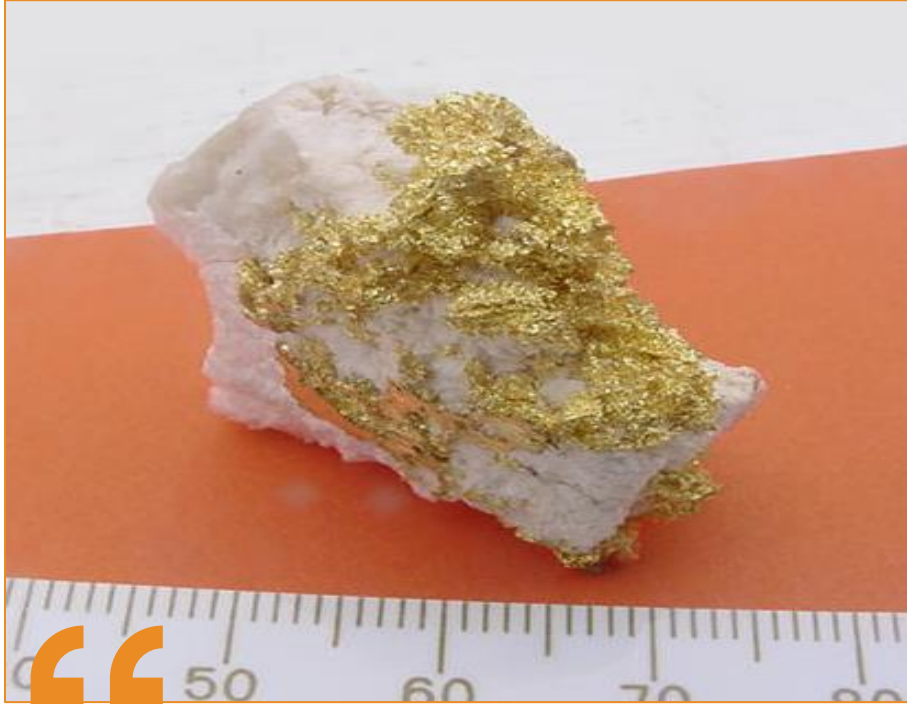
Q4 2024

Disclaimer



This material includes “forward-looking” statements or information within the meaning of Canadian securities legislation and the United States Private Securities Litigation Reform Act of 1995. Forward-looking statements relate to future events or the anticipated performance of Leocor Gold Inc. (“the Company” or “Leocor”) and reflect management’s expectations, objectives or beliefs regarding such future events and anticipated performance. In certain cases, forward-looking statements can be identified by the use of words such as “further” “suggests”, “further evidence”, “potentially”, “possibly”, “indicates” or variations of such words and phrases or statements that certain actions, events or results “may”, “could”, “would”, “might”, or “will be taken”, “occur” or “be achieved”, or the negative of these words or comparable terminology. Forward looking statements rely on a number of assumptions which management believes to be reasonable, including assumptions regarding the Company’s ability to obtaining necessary financing, personnel, equipment and permits to complete its proposed exploration plans, and to identify additional gold properties for exploration. By their very nature forward-looking statements involve known and unknown risks, uncertainties and other factors which may cause the actual performance of the Company to be materially different from any anticipated performance expressed or implied by the forward-looking statements. Such factors include various risks related to the Company’s operations, including, without limitation, fluctuations in spot and forward markets for gold and other metals, fluctuations in currency markets, changes in national and local governments and generally, the speculative nature of mineral exploration and development, risks associated with obtaining necessary operating and environmental permits, the presence of laws and changes in regulations that may impose restrictions on mining, limitations in respect of management time and resources, lack of personnel and equipment necessary to carry out the Company’s proposed exploration and development and other delays (including in obtaining financing) which could result in the Company missing expected timelines, and the fact that the Company may not be able to identify additional mineral properties for acquisition or option on acceptable terms. Although the Company has attempted to identify important factors that could cause actual performance to differ materially from that described in forward-looking statements, there may be other factors that cause its performance not to be as anticipated. The Company neither intends nor assumes any obligation to update these forward-looking statements or information to reflect changes in assumptions or circumstances other than as required by applicable law. There can be no assurance that forward-looking statements will prove to be accurate, as actual results and future events could differ materially from those currently anticipated. The information contained in this document is drawn from sources believed to be reliable, but the accuracy and completeness of the information is not guaranteed, nor does the Company assume any liability. The Company disclaims all responsibility and accepts no liability (including negligence) for the consequences for any person acting, or refraining from acting, on such information. This document is neither an offer nor the solicitation of an offer to sell or purchase any investment. Any unauthorized use, disclosure, distribution or copying of this document by anyone other than the intended recipient is strictly prohibited.

Corporate Overview



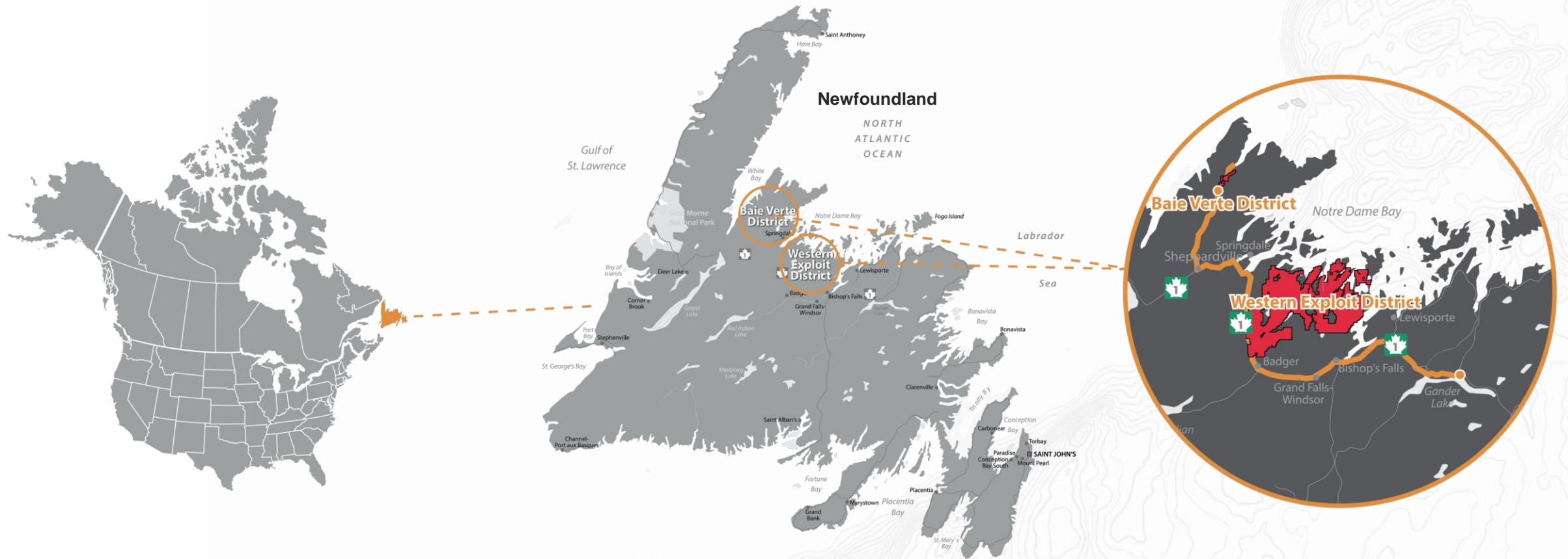
“Newfoundland is getting ready to undergo one the most aggressive gold exploration phases since the 1988-89 rush where more than 80% of the known gold showings were discovered. With the compilation and interpretation of new data, Leocor is positioned for discovery on some of these key structures.”

~ Alex Klenman, CEO

- ✓ **LEOCOR Gold Inc** is a rapidly growing resource exploration & development company principally focused on strategic growth leveraging overlooked, undervalued or unexplored project potential in the province of Newfoundland, Canada. The province has become a hotspot for mineral exploration companies and investors looking for precious metals' exposure.
- ✓ Newfoundland offers one of the most extensive mining histories in Canada, with small-scale mining dating back to the 1770s, which expanded into a major industry by the 1860s. The province offers world-class geology, significant infrastructure and exceptional access to a skilled workforce.
- ✓ We've assembled an experienced leadership and advisory team with **decades of success** in exploration and discovery.



Project Locations – Newfoundland, Canada



The Island of Newfoundland represents an emerging, underexplored gold district, where focused exploration for precious metals was essentially non-existent prior to the early 1980's.

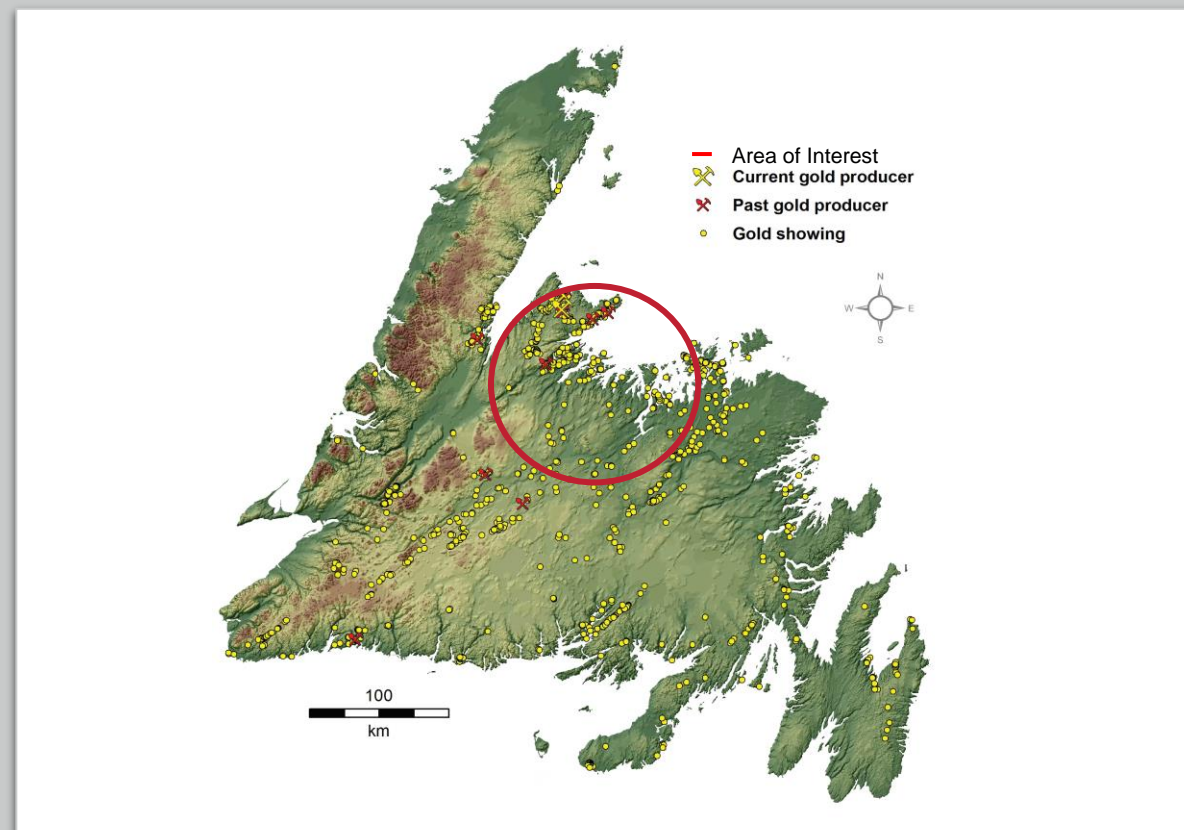
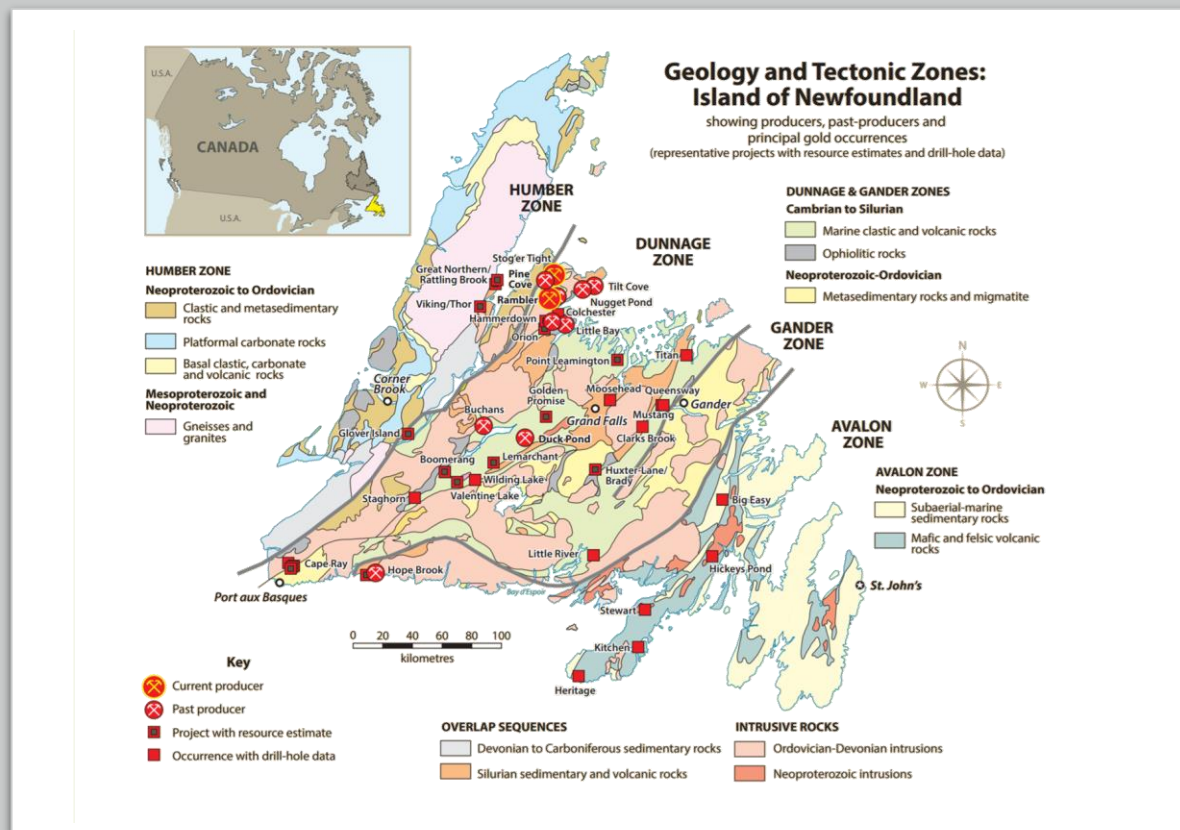
NEWFOUNDLAND

GOLD

Our district scale, Atlantic Exploration Portfolio encompasses 145,975 hectares of prospective gold claims in two mining districts: The **Baie Verte and Western Exploit Districts** across north-central Newfoundland's Dunnage Zone.



Previous exploration and recent efforts by the Company indicate **multiple zones of high-grade gold mineralization prospects.**





Baie Verte District

PROJECTS:

Dorset & Dorset Extension

Copper Creek

Five Mile Brook



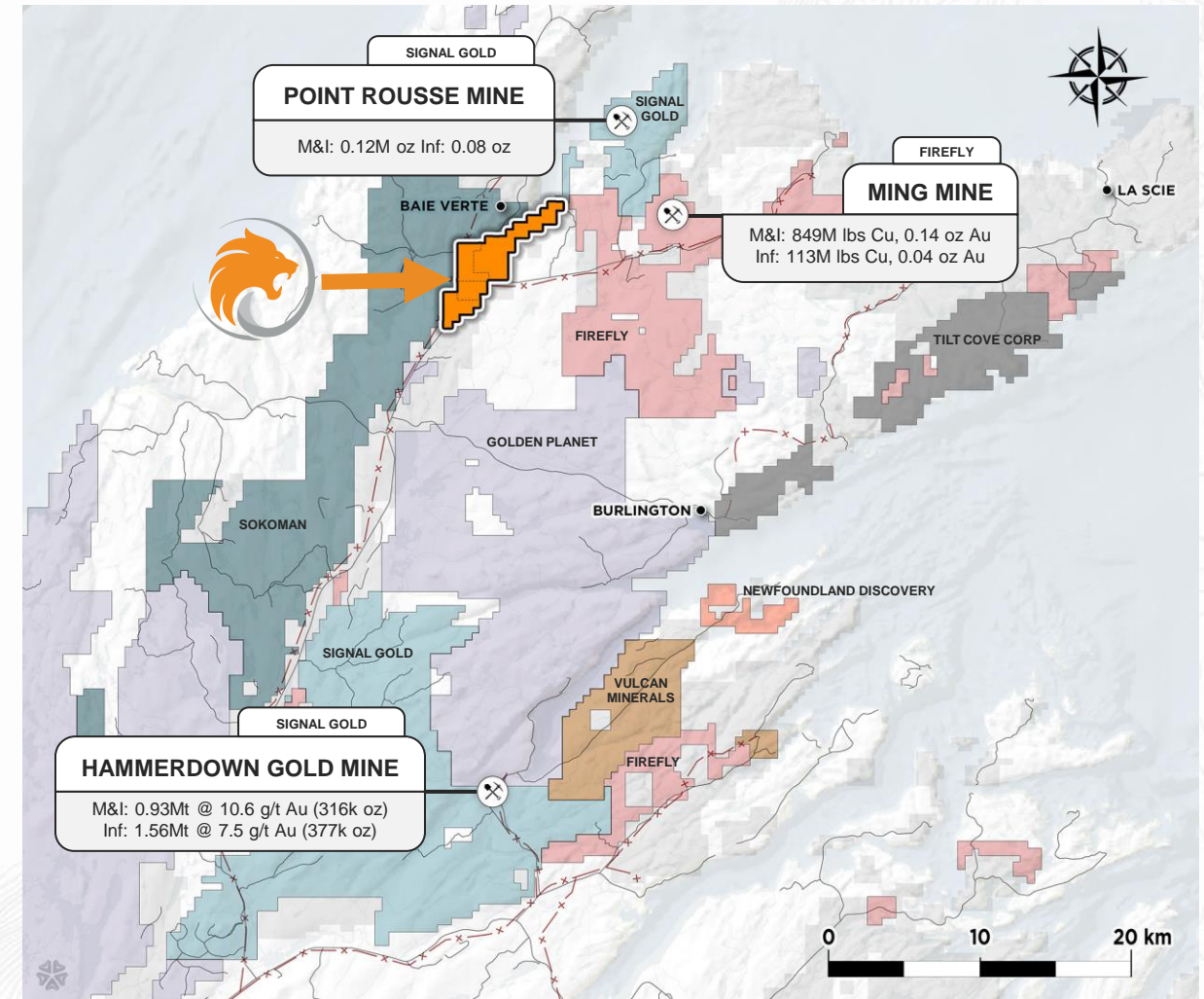
LEOCOR Atlantic Exploration Portfolio

The Baie Verte Gold District

A **~2,000-ha land package** containing multiple gold occurrences and mineralized zones surrounded by active mine operations.

Located in North Central Newfoundland, Canada the Leocor holdings consist of the **Dorset, Dorset Extension, Five Mile Brook and Copper Creek projects**. The district extends on-trend across a highly structured and defined part of this mineral rich region.

Surrounded by mine operators, developers and explorers such as FireFly metals (ASX: FFM), Signal Gold (TSX: SGNL), Sokoman Minerals (TSX-V: SIC), Newfound Gold Corp (TSX.V: NFG), Golden Planet Mining Corp., Vulcan Minerals Inc., and others, this is a mining-friendly region originally opened up by Noranda Mines.





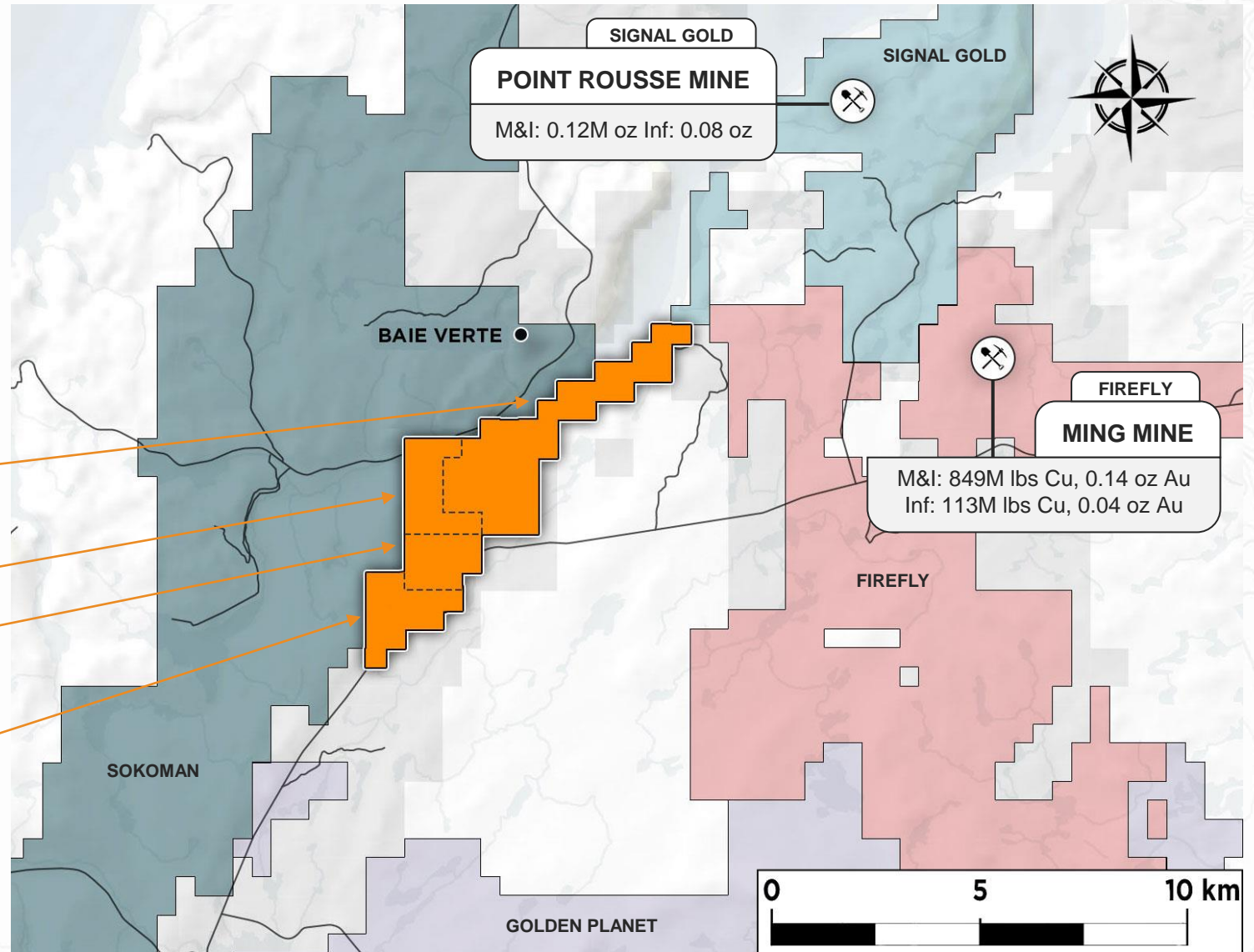
LEOCOR Baie Verte District

Copper Creek

Dorset Extension

Dorset

Five Mile Brook



The Dorset Gold Project

Baie Verte District

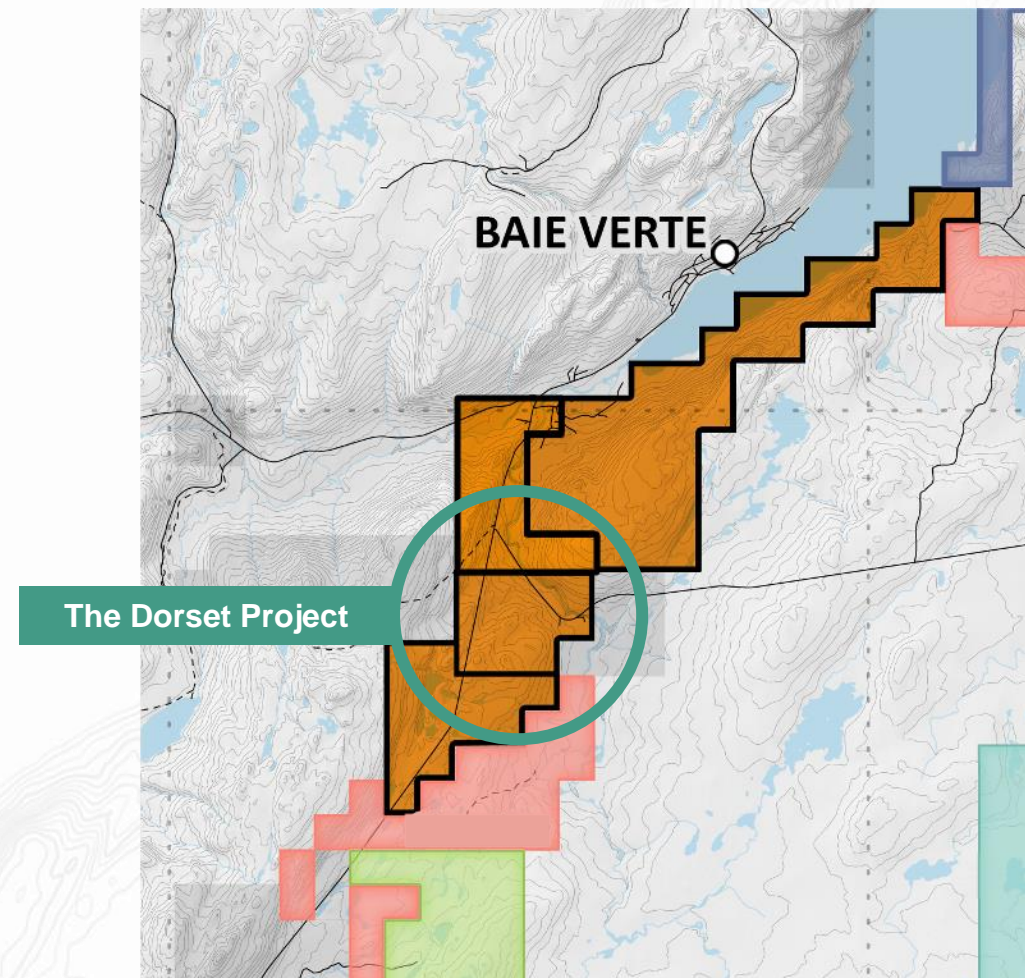
BAIE VERTE



The Dorset Gold Project is a 600-hectare project area containing **multiple gold occurrences and mineralized zones**, located just south of the Pine Cove Gold Mine in North Central Newfoundland on the Baie Verte Peninsula

Leocor Gold holds a 100% interest in the project which includes the ground between and adjacent to the Company's central Dorset Gold Project and The Copper Creek project to form a contiguous land package.

The Dorset Project is our flagship exploration target within this District with abundant historical data and two significantly mineralized quartz veins with extensive surface showings.



Dorset Project Drill Program

Baie Verte District

BAIE VERTE



The Dorset project is highly prospective for high-grade gold zones and the **2025 drill program** will be designed to test some of the priority zones within a prominent 1 x 2 km gold-in-soil anomaly originally delineated by Leocor in 2022.

Highlights from the 2022 Rotary Air Blast (“RAB”) drill program* include:

- Sharpie Ridge Target: 2.32 grams-per-tonne (“g/t”) gold (“Au”) over 10.67m; including 10.2 g/t Au over 1.52m. New target that is open along strike and at depth.
- Braz NE Target: 3.18 g/t Au over 4.57m from surface. New target that is open along strike and at depth.
- Dorset Main Target: 1.41 g/t over 7.62m. Confirming geometry of the mineralized zone.

* See Leocor News Release dated [December 1, 2022](#).

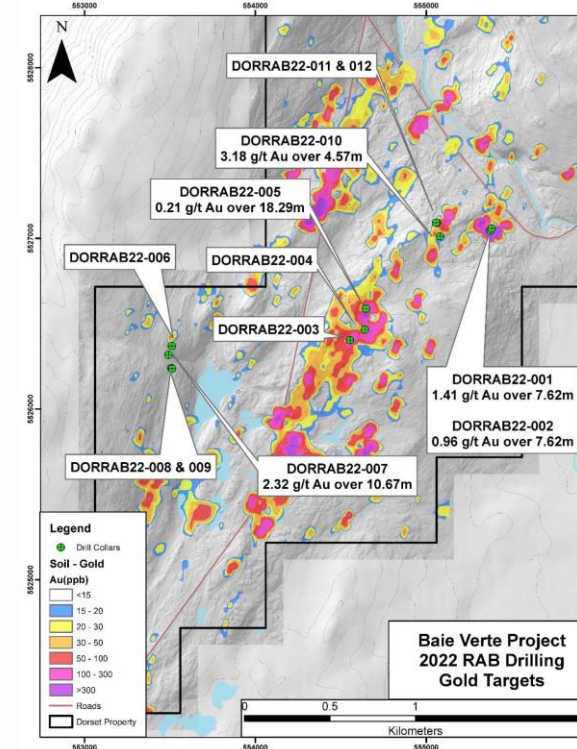


Figure 1: Fall 2022 drill locations, Dorset claims, Baie Verte Project, NW Newfoundland

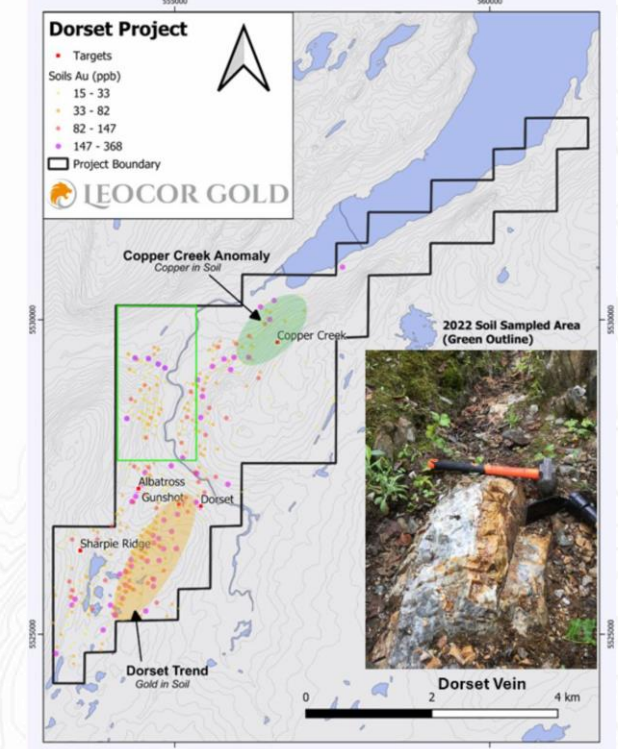
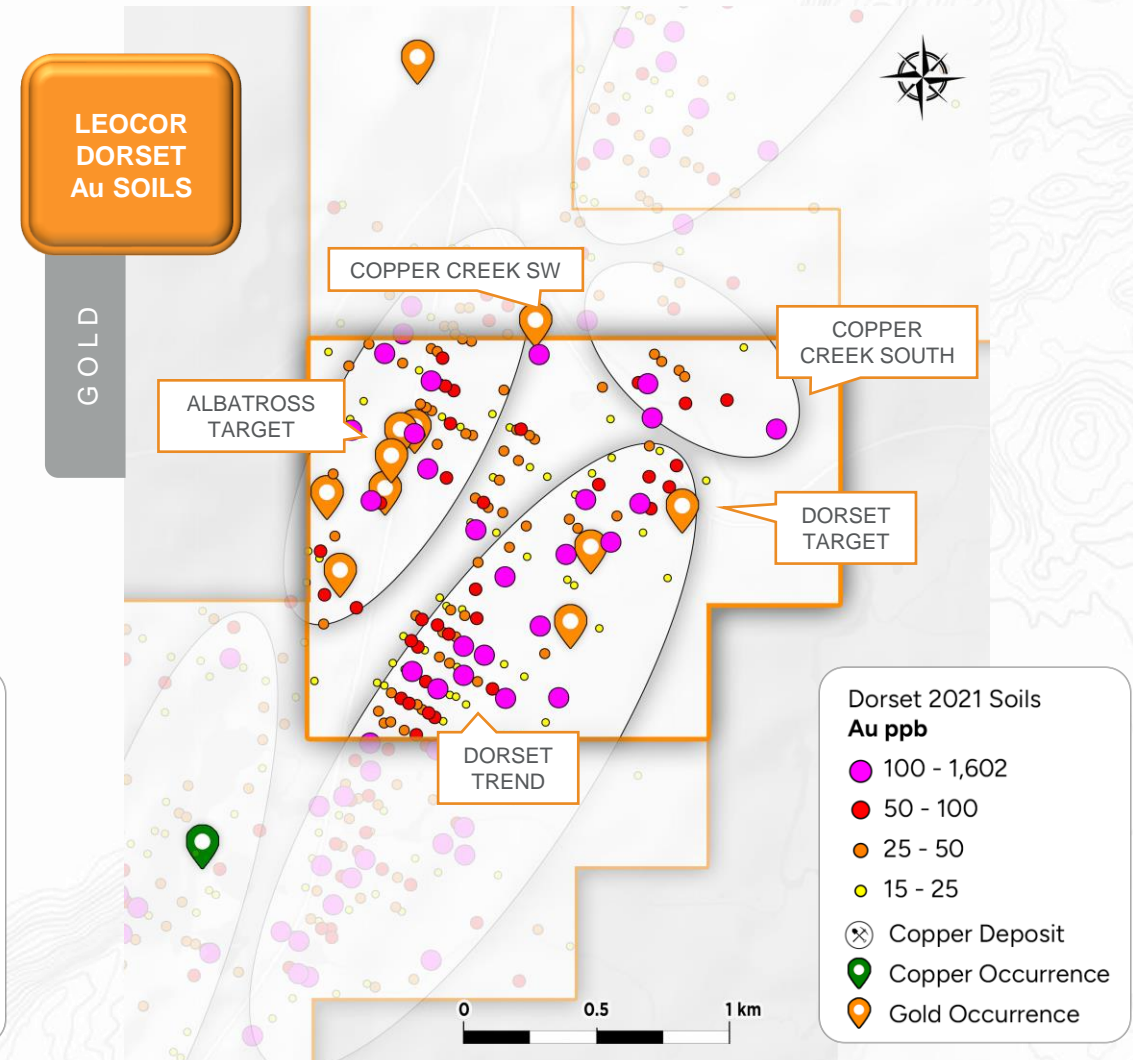
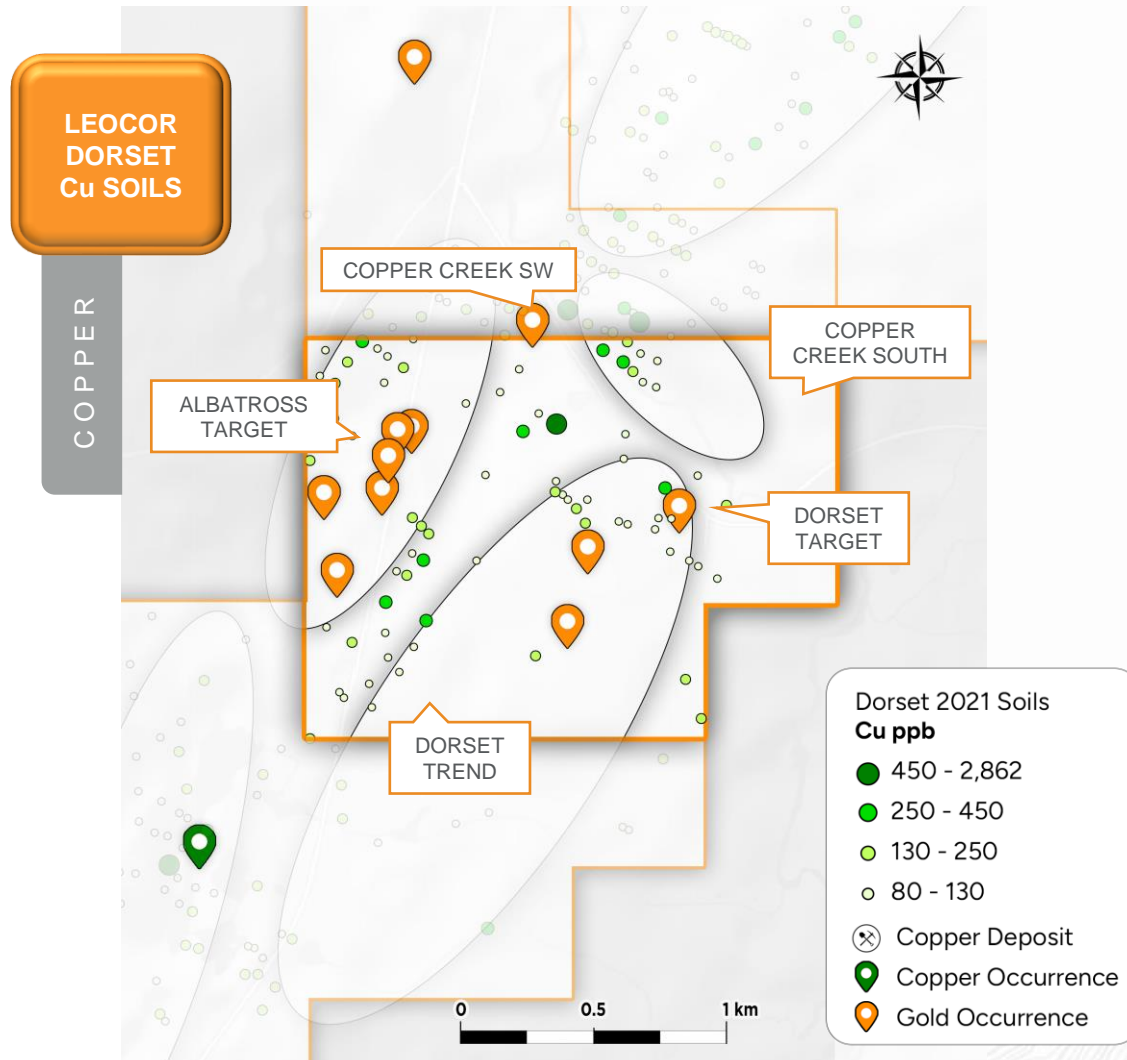


Figure 2: soil anomalies, Dorset claims, Baie Verte Project, NW Newfoundland

Dorset Project Soil Samples

Baie Verte District

BAIE VERTE



Dorset Project Historic Results

Baie Verte District



CASA LOMA

Grab Samples:
7.3 g/t Au
Channel Sampling:
2.3 g/t Au over 2m

ALBATROSS

Grab Samples:
30.3 g/t Au
Channel Sampling:
2.8 g/t Au over 5m
Drilling:
1.0 g/t Au over 7.3m &
1.81 g/t Au over 4.3m

GUNSHOT

Channel Sampling:
0.4 g/t Au over 18m

POWERLINE

Channel Sampling:
1.6 g/t over 1.6m &
1.39 g/t Au over 1.15m

DORSET

Grab Samples:
407.9 g/t Au
Channel Sampling:
41.6 g/t Au over 1.5m

BRAZ

Grab Samples:
314.0, 40.0, 31.4, 21.2,
19.2 & 14.8 g/t Au
Channel Sampling:
2.3 g/t Au over 0.4m &
5.7 g/t Au over 0.5m

CENTRAL CARBONATE

Grab Samples:
5.5, 4.6 & 2.8 g/t Au
Channel Sampling:
0.35 g/t Au over 5m &
0.20 g/t Au over 2m

PHOENIX

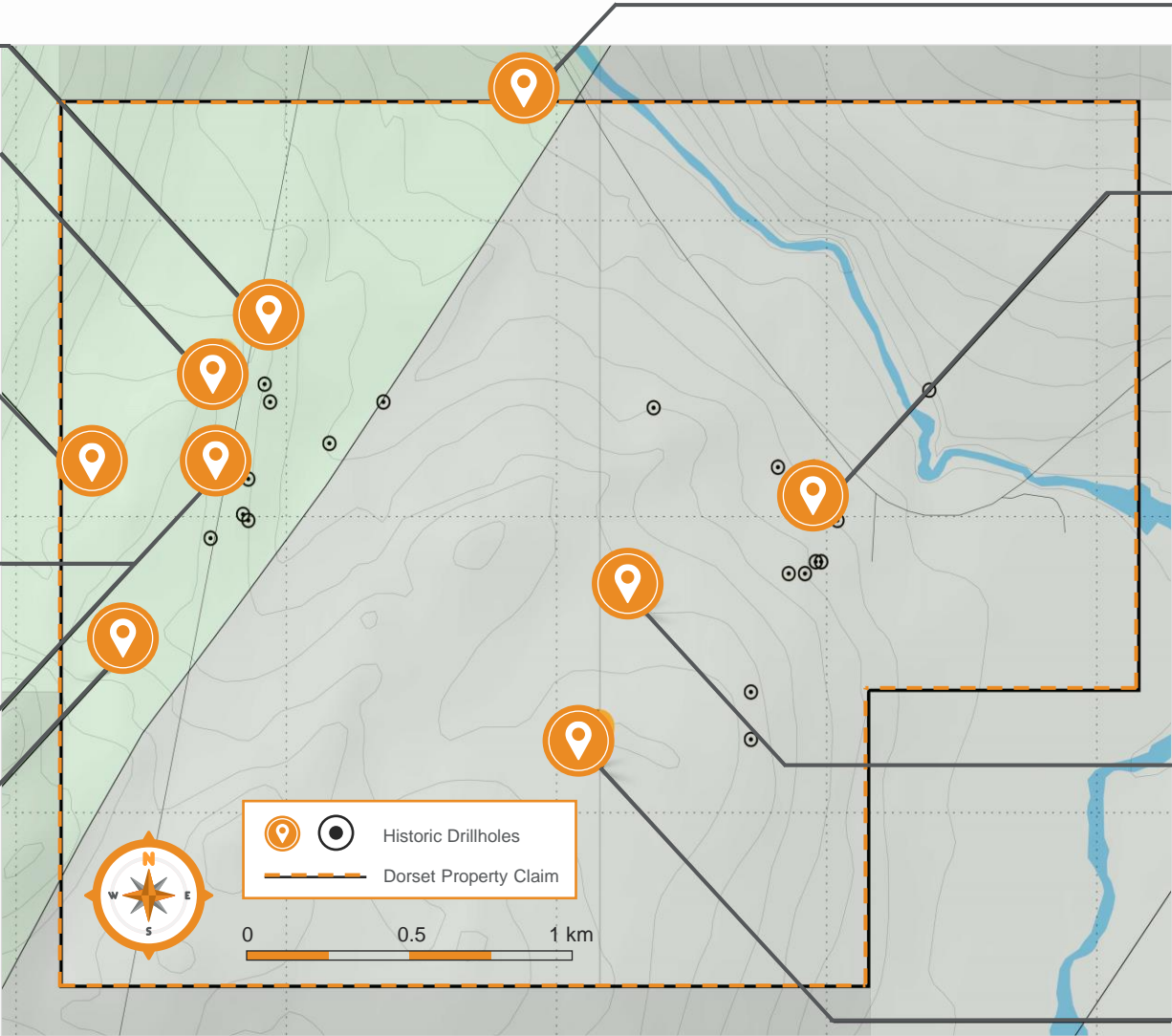
Grab Samples:
5.8, 5.5 & 3.3 g/t Au
Channel Sampling:
2.8 g/t Au over 5m
Drilling:
1.07 g/t Au over 5.45m

PHOENIX EXTENSION

Grab Samples:
3.2, 1.89, 3.42 & 31g/tAu
Channel Sampling:
0.22 g/t Au over 1.5m

DORSET EXTENSION

Channel Sampling:
56 g/t Au over 2.5m



Copper Creek Project

Baie Verte District

BAIE VERTE



Located in the **north-central** portion of the Baie Verte Peninsula, Copper Creek extends to within 1.6 km of the active Pine Cove gold mine.

The project's southwestern section is host to a number of gold prospects and copper occurrences associated with extensive alteration/shear zones developed within a thrust-faulted sequence of quartz-Fe-carbonate-fuchsite-altered gabbros, ultramafics and mafic volcanics, of the Advocate (ophiolite) Complex, and intermediate to silicic volcanoclastics & tuffs and microgabbroic dykes/sills, of the Flatwater Pond (cover sequence) Group.



Previous assay results on the property include a channel sample of 3.9 g/t Au over 4m,* and 16 g/t Au* grab samples, in addition to 7.33 g/t Au** at the Biarritz North showing.



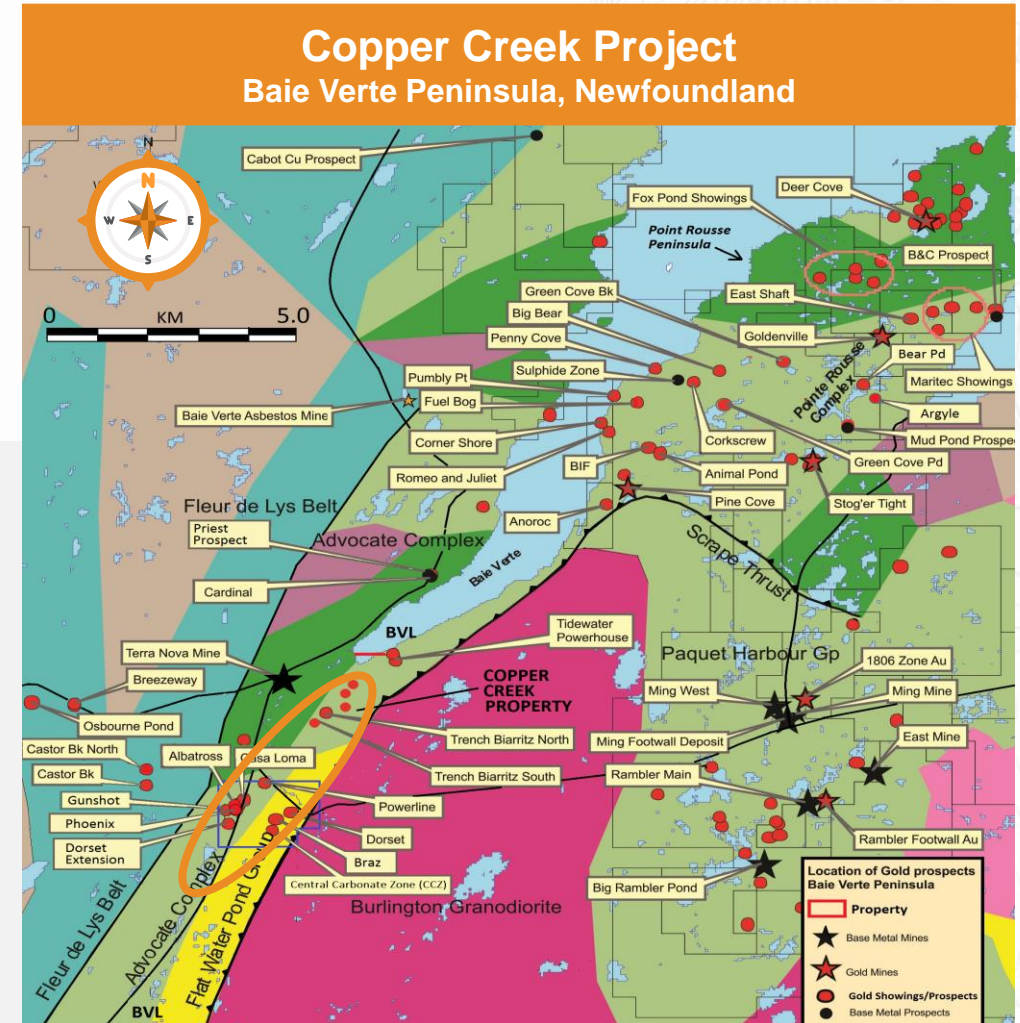
Historic sample assays at the Biarritz South prospect includes 9.2 g/t Au & 4.05 g/t Au,* in addition to sampling conducted by Anaconda (2004) and Chan (2013-2019) that collectively returned assays of 11.35 g/t, 3.08, g/t & 1.33 g/t Au.



The Tidewater and Powderhouse showings produced grab samples of 8.23 g/t Au & 2.71 g/t Au respectively.*

* Noranda ** Chan 2013

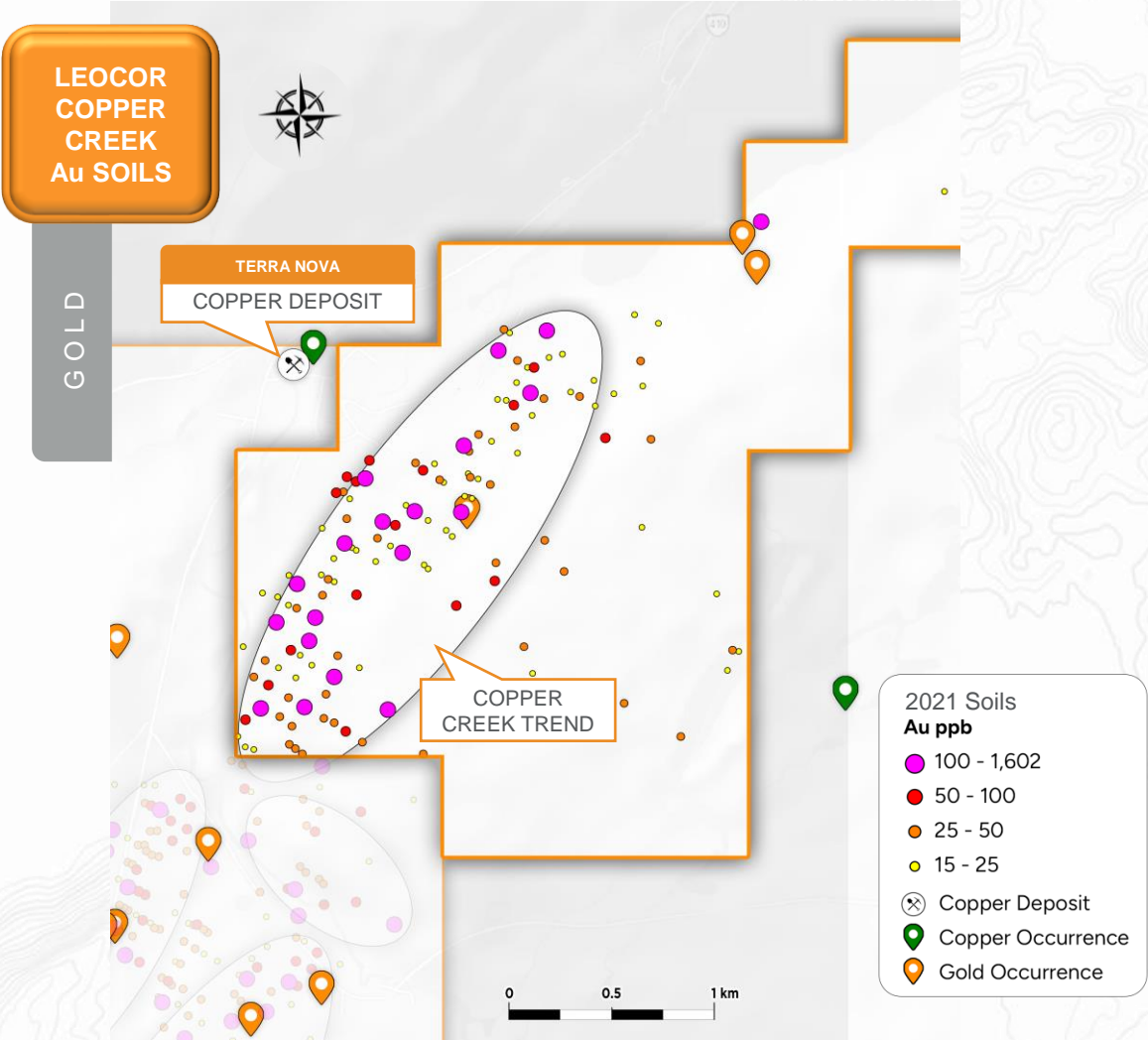
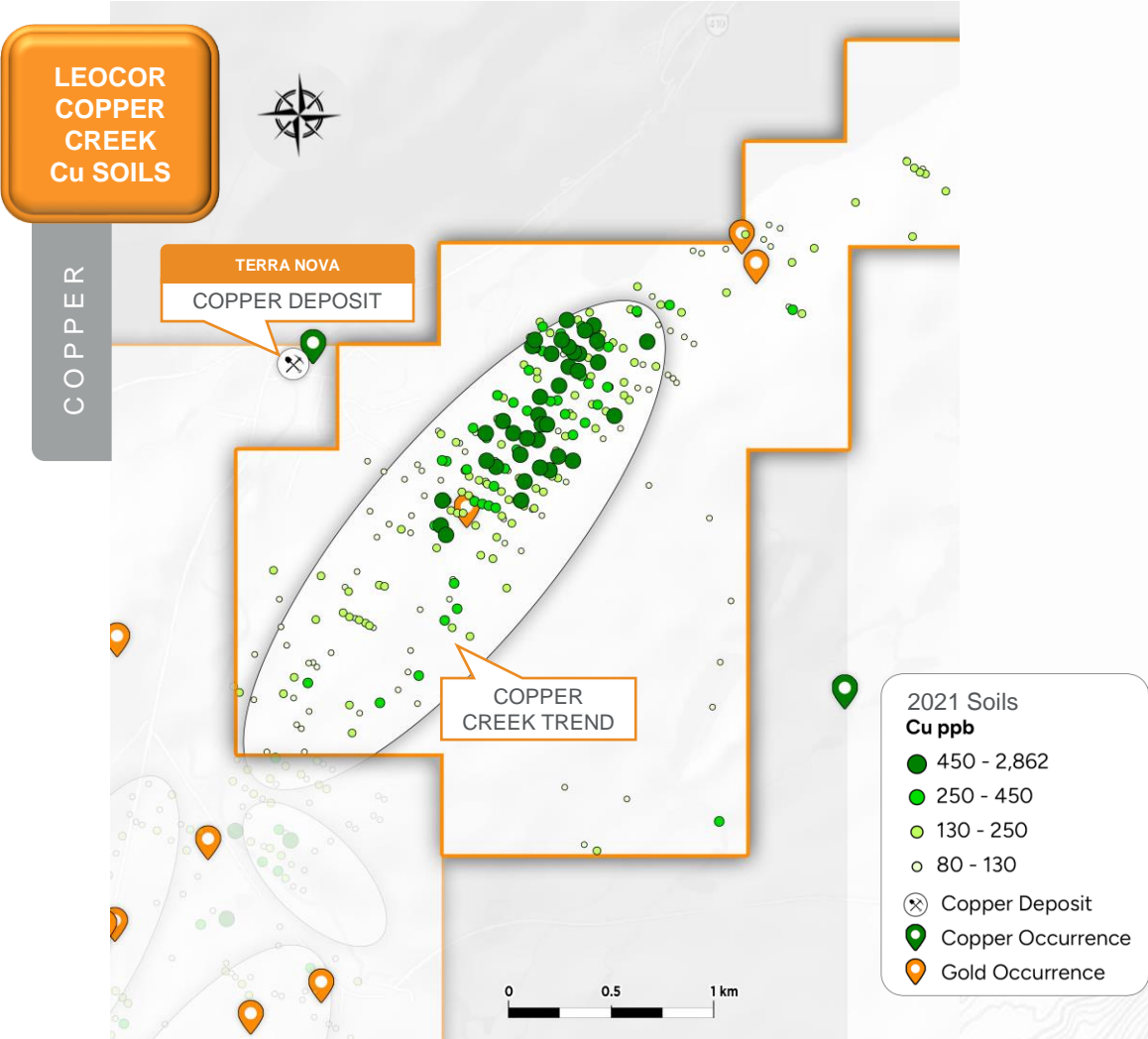
☐ Grab samples mentioned in this presentation are selective by nature and are unlikely to represent average grades of the property.



Copper Creek Project Soil Samples



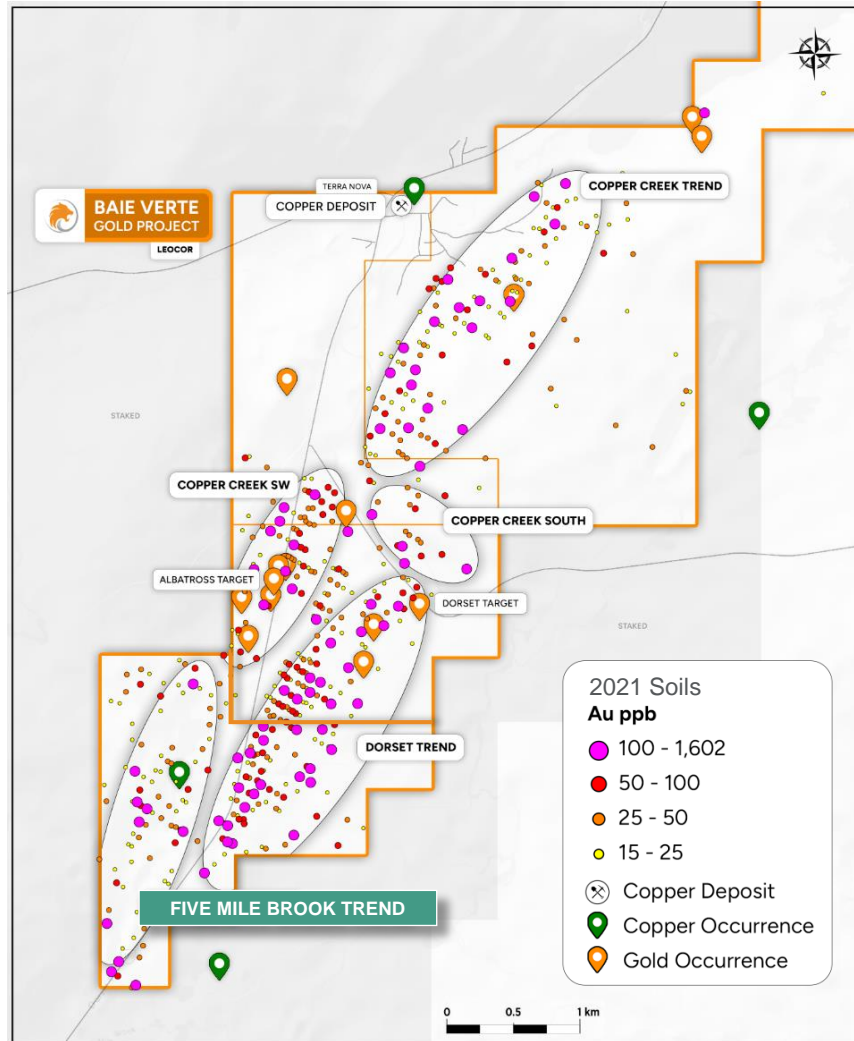
Baie Verte District



Five Mile Brook Project

Baie Verte District

BAIE VERTE



The **Five Mile Brook** project consists of a single mineral license (25481M), comprised of **8 claims contiguous to the Dorset Gold Project**



Prior to the mid-1980's, the only recorded exploration work for the Five Mile Brook project consisted of a reconnaissance work by Consolidated Rambler Mines Ltd, in 1976, along the western claim boundary area.



Three non-contiguous samples returned assays of: 1.63% Cu, 0.56 g/t Au, 226 g/t Ag & 0.28% Zn over 0.61 m; 0.32% Cu, 0.51 g/t Au & 3005 g/t Ag over 0.61 m; and 0.49% Cu, 0.62 g/t Au, 226 g/t Ag & 0.18 % Zn over 7.62 m (Collins, 1976).



Western Exploit District

PROJECTS:

Robert's Arm

Leamington

Hodge's Hill



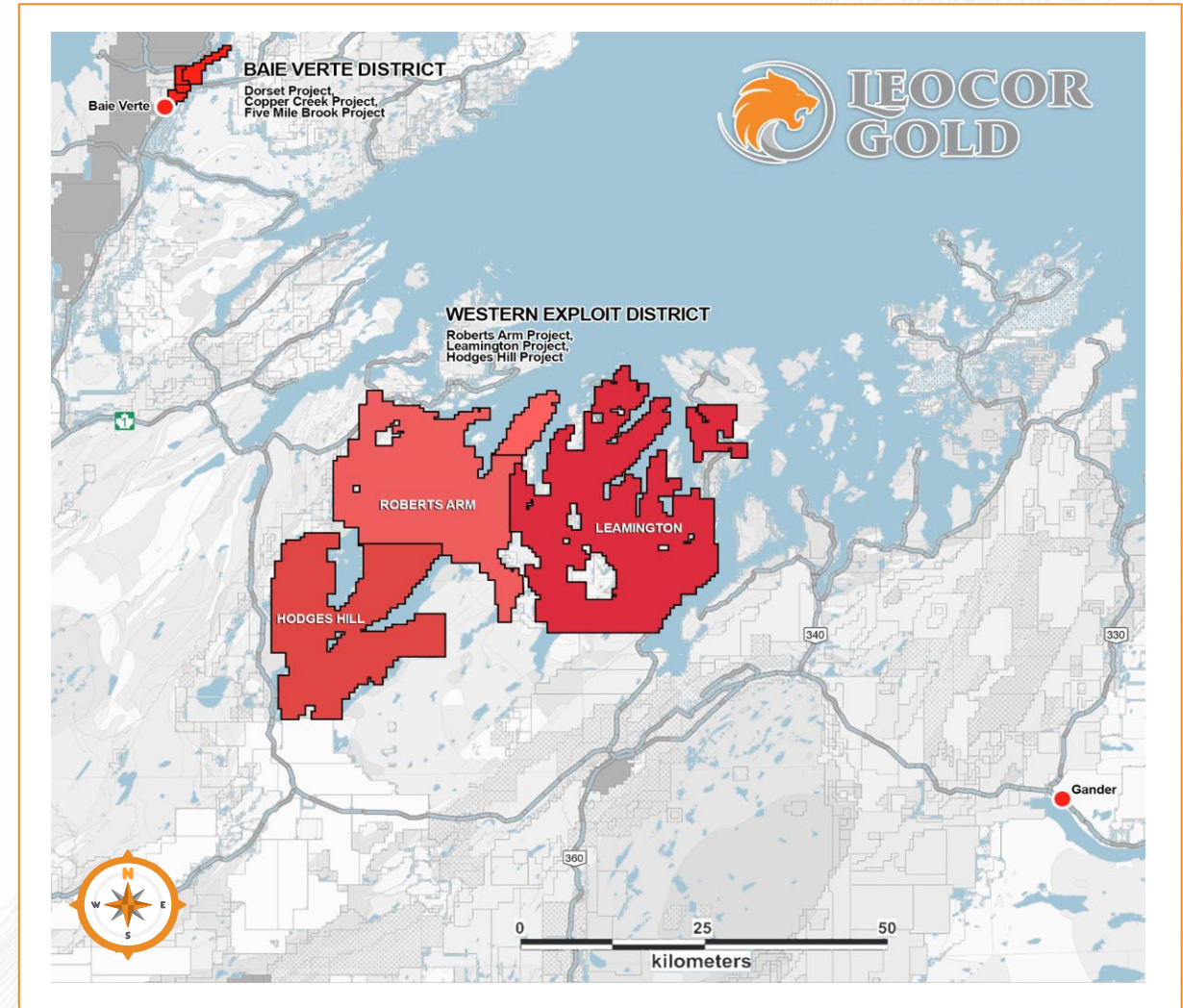
Leocor Western Exploit District

The Western Exploit District

Three contiguous projects represent a **144,000-hectare** (355,832-acre) land package in the heart of Newfoundland.

The **Robert's Arm, Leamington and Hodge's Hill** prospective exploration lands cover numerous geologically favorable corridors conducive to gold mineralization across 5,760 mineral claims covered by 37 licenses.

The claims are host to **distinct magnetic high units (Gabbro's)** in settings indicative of known regional gold occurrences. Named after Gabbro, a hamlet near Rosignano Marittimo in Tuscany, these rocks are associated with continental volcanism, a region-specific gold target indicator.



Robert's Arm Project

Western Exploit District

WESTERN EXPLOIT



OVERVIEW

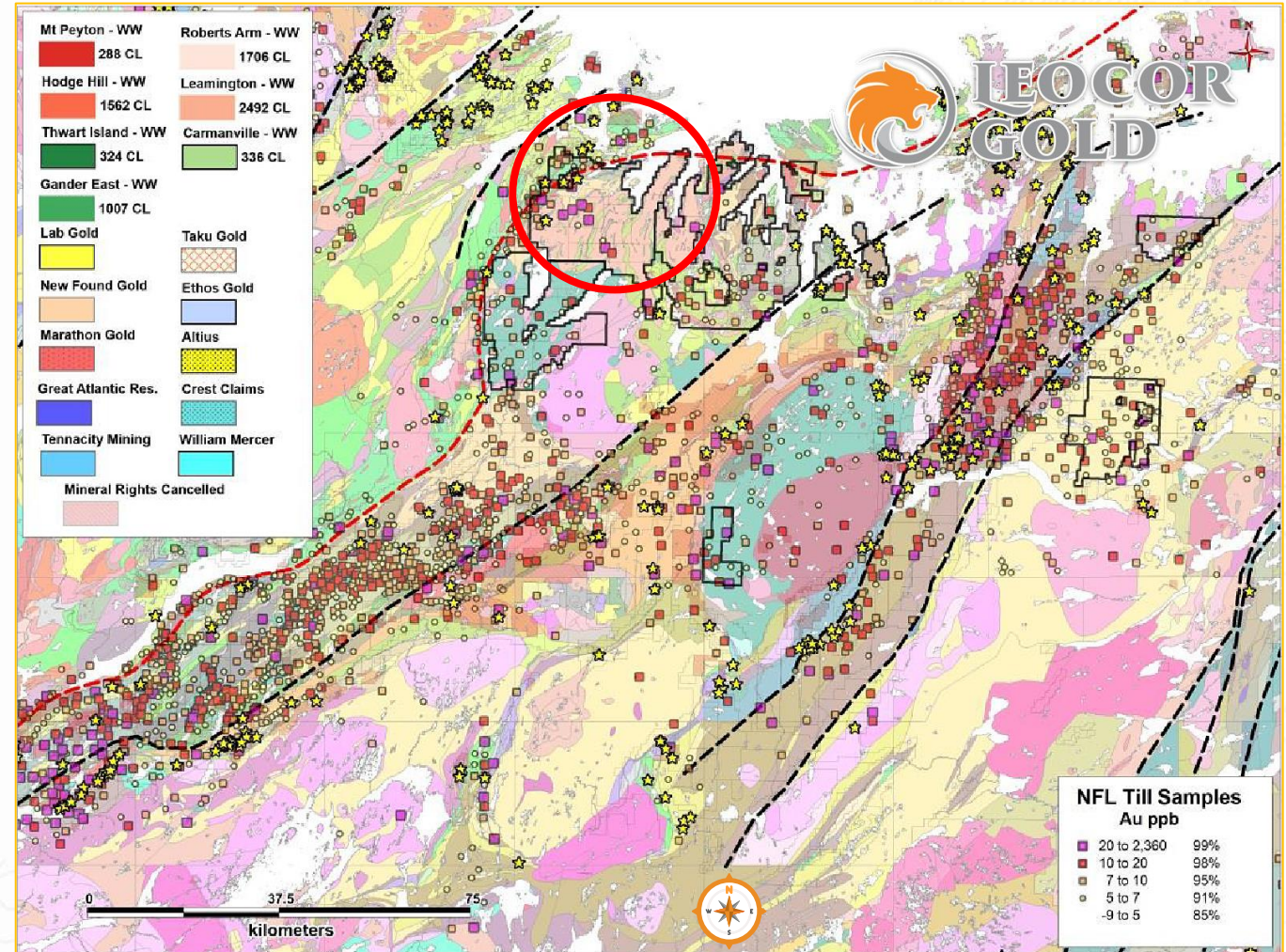
The project is located in the north-west corner of the Western Exploit District at 42,650 hectares in size.

Location: The NW corner of the project is 2 km south of the community of Roberts Arm.

Claims: Cover 12 mineral licences for a total of 1,706 claims, or 42,650 hectares (426 square km).

Access: Highway 380 runs through the NW corner of the claim block with Forestry roads running through 8 of the 12 licenses.

Highlight: The property straddles 38 km of the Red Indian Line suture zone and also has approximately 200 km of magnetic high lineaments *which are untested gabbro's*.



Leamington Project

Western Exploit District

WESTERN EXPLOIT



OVERVIEW

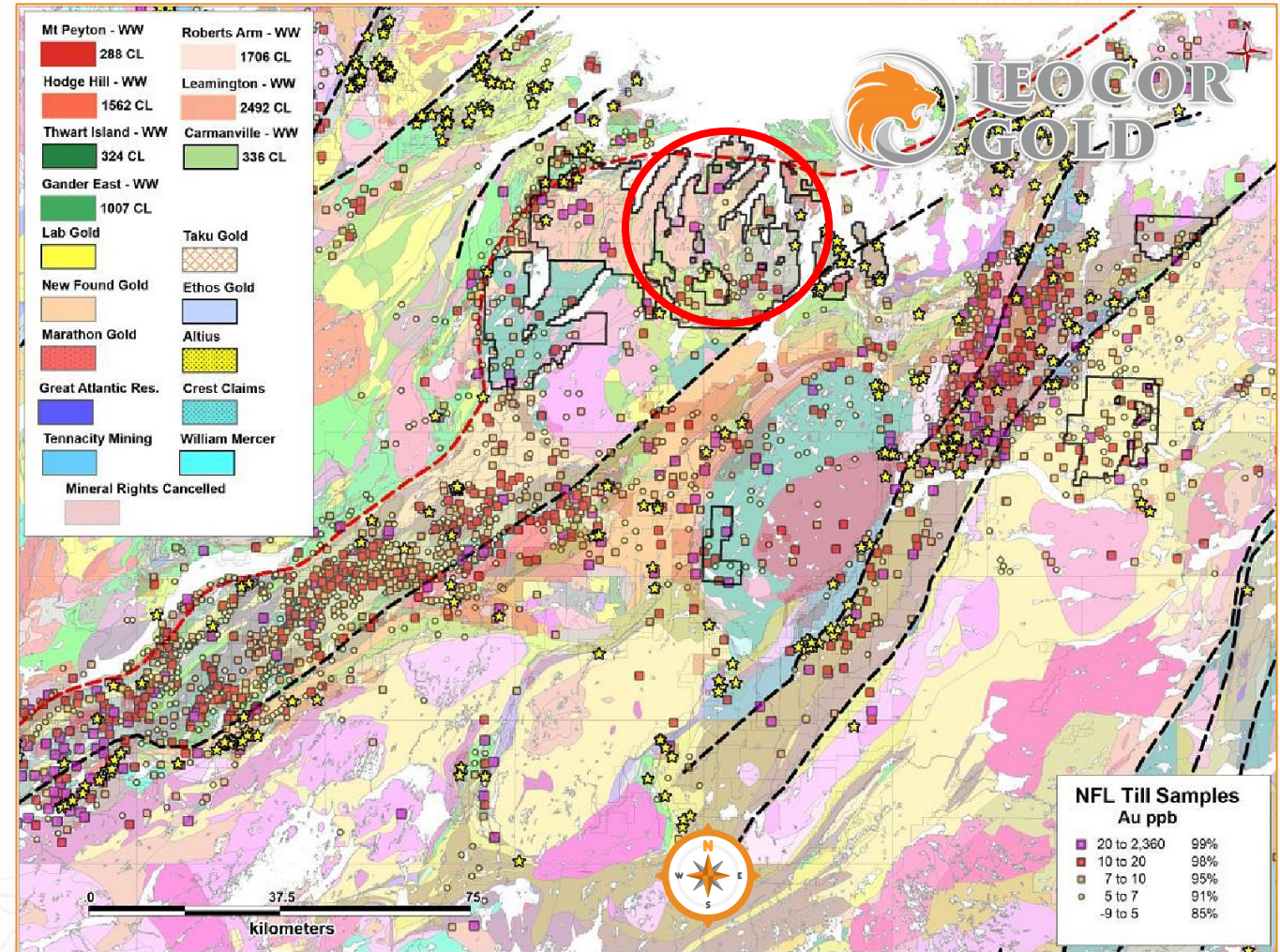
The largest of the three Western Exploit District project areas at 62,300 hectares located in the north-east corner of the District.

Location: A few smaller communities are situated on the project such as Leading Ticks to the north, Point Bay to the west and the largest, Point Leamington located in the central area.

Claim: Covers 16 mineral licences for a total of 2492 claims, or 62,300 hectares (632 square km).

Access: Highway 350 runs through the central part of the project and highway 352 runs along the western side. There are a large number of forestry roads in the area, providing easy access to 15 out of the 16 licenses.

Highlights: Targets close to 100 km (20km is on Red Indian Line) of various regional structures. Roughly 50-60 km of prospective gabbro's with limited previous exploration which offered grab samples of 2 to 5 g/t Au.



Hodge's Hill Project

Western Exploit District

WESTERN EXPLOIT



OVERVIEW

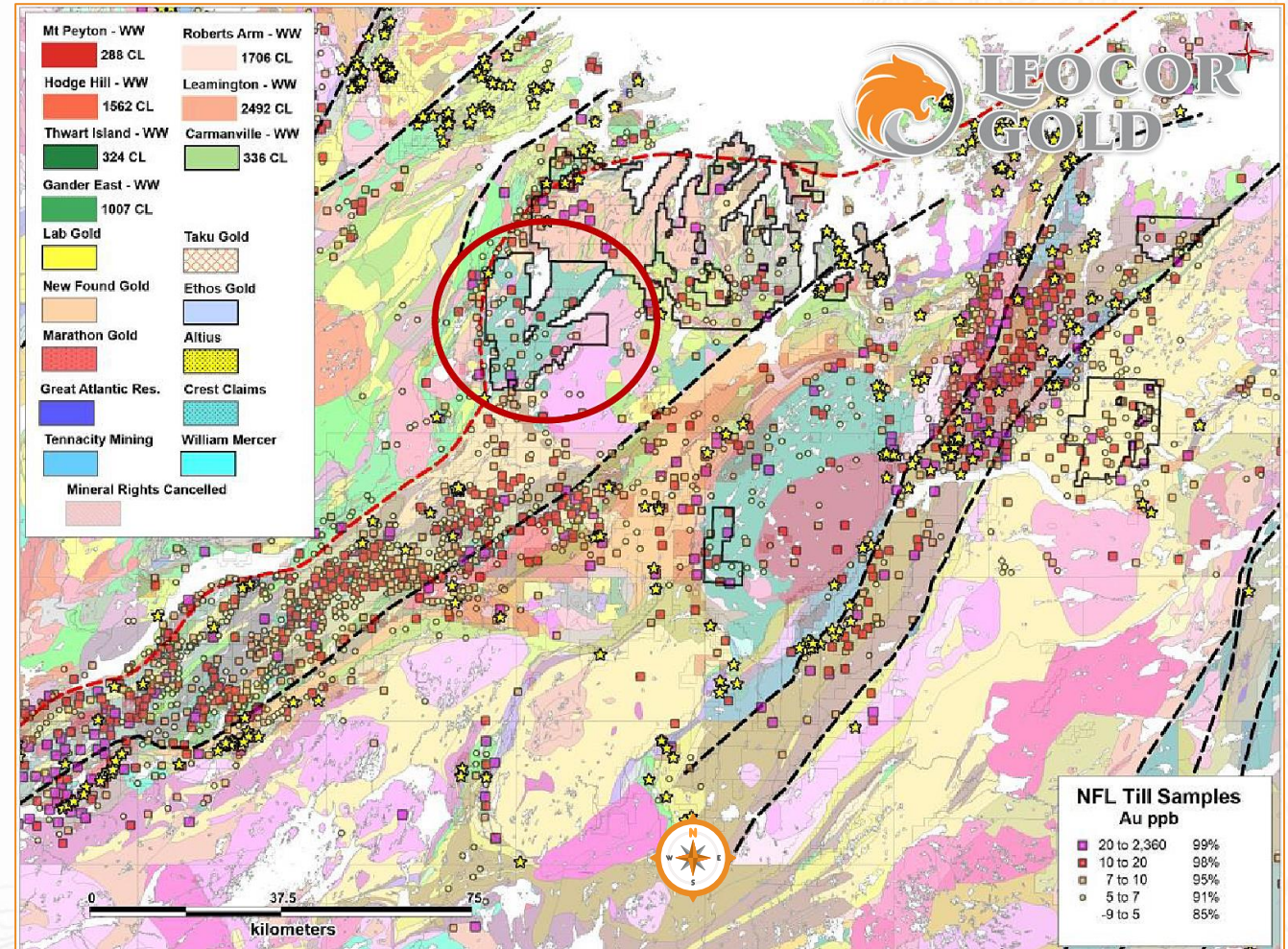
The project consists of 39,050 hectares located in the south-west corner of the Western Exploit District.

Location: Located 12 km north of the community of Badger along the Trans-Canada Highway.

Claim: Covers 9 mineral licences for a total of 1562 claims, or 39,050 hectares (390 square km).

Access: Forestry roads run through 8 of the 9 licenses.

Highlights: The projects covers one of the most prospective rocks: a Pyroxene Gabbro. Gabbro's have long been recognized in the past as being directly associated with gold mineralization in the Baie Verte area such as Anaconda Mines Pine Cove deposit and more recently, the discovery (2014) by Anaconda of the Stog'er Tight and Argyle showings.



Leocor Gold | A District Scale Portfolio



Leocor's two districts encompass a total of **~145,975 hectares** (~360,712-acres):

- **Baie Verte**
- **Western Exploit**



BAIE VERTE DISTRICT

100% owned, **~1,975-ha** advanced gold exploration project



WESTERN EXPLOIT DISTRICT

100% owned **~144,000-ha** poised for targeted exploration

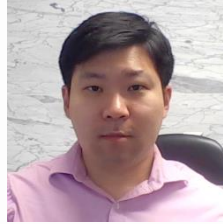
Management & Board



ALEX KLENMAN
CEO and Director

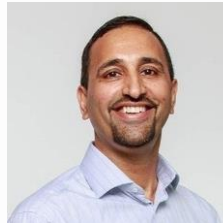
Mr. Klenman brings over three decades of both public and private sector business development, finance, marketing, branding, media, and corporate communications experience as CEO of Leocor Ventures. After a decade in private sector media related positions, which included notable board positions with CKVU Television and Canwest Pacific Television in Vancouver, he began his career in the public markets in the late 1990s serving in business development and communications roles for publicly listed Internet and tech companies.

Over the past decade Mr. Klenman has held senior management, consulting roles, and board positions with multiple TSX Venture and CSE listed companies. As a consultant he worked closely with well known TSX Venture listed resource companies such as Roxgold Inc., Integra Gold, and Forum Uranium, and currently he holds board and senior management positions with several publicly traded resource companies, including Azincourt Energy, Arbor Metals Corp, Manning Ventures, Terra Clean Energy, and others.



BRIAN SHIN
CFO and Director

Mr. Shin specializes in providing financial reporting, corporate finance, auditing, corporate strategy, risk management and other accounting services to both public and private companies in various industries. He holds the professional designation of Chartered Professional Accountant (CPA) in B.C. and Canada and Certified Management Consultant (CMC). Mr. Shin has had extensive experience as a consultant, controller and auditor for numerous publicly traded and private corporations in several industries in multiple countries such as Canada, Hong Kong, and South Korea.



CHARANJIT HAYRE
Director

Mr. Charanjit Hayre is a very experienced and successful entrepreneur helping start-ups in every stage of their development process. Mr. Hayre is currently Chief Operating Officer & Director at Taipak Enterprises Ltd. and Chief Operating Officer & Director at Easysnap NA. Mr. Hayre was previously employed as Independent Director by Iron Tank Resources Corp., Executive Vice President by Great Bear Resources Ltd., Chief Operating Officer by Asentus Consulting Group Ltd., and Senior Manager-Enterprise Risk Services Group by Deloitte & Touche LLP. He also served on the board at MAX Minerals Ltd.

Capital Structure



Shares Outstanding
97,757,402



Investments
~\$5M CAD



Warrants
38,300,000




Cash
~\$3M CAD

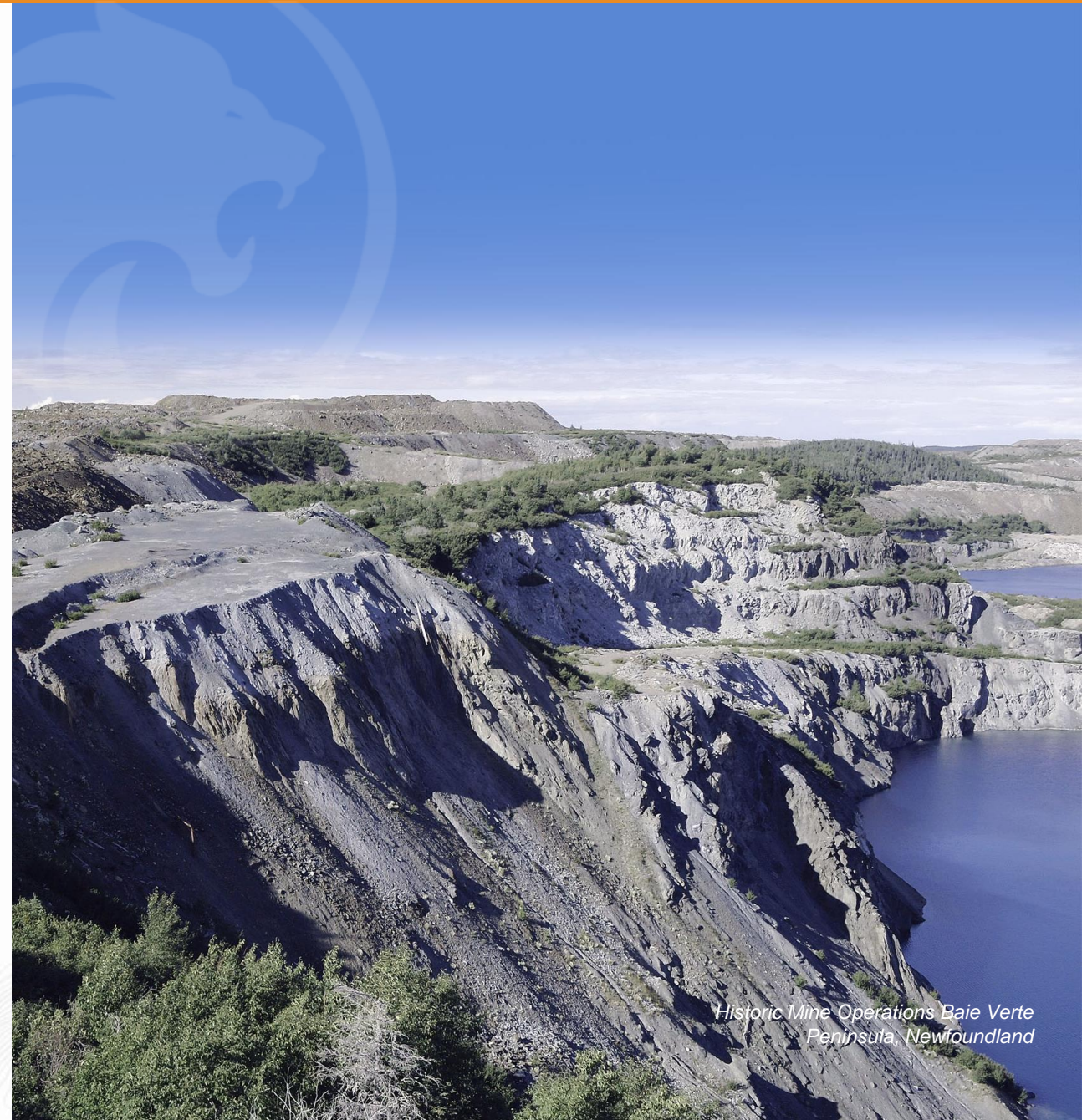
Thank you for your interest

LEOCOR GOLD INC.

 +1 (604) 681 0084

 aklenman@leocorgold.com

 Suite 303, 750 West Pender Street
Vancouver, BC V6C 2T7 Canada



*Historic Mine Operations Baie Verte
Peninsula, Newfoundland*

Addendum: Historic Minfile Compilation Data Sources



Central Carbonate

Grab samples returned highs of 5.5, 4.6 and 2.8 g/t Au. Detailed channel sampling identified two anomalous zones within the alteration returning 0.35 g/t Au over 5.0 m and 0.20 g/t Au over 2.0 m (MacDougall, 1990).

<https://gis.gov.nl.ca/mods/ModsCard.asp?NMINOString?temp=n&NMINOString=012H/16/Au%20010>

Dorset

Dorset # 1: 0.25 m wide quartz vein with disseminated pyrite, grab samples up to 407.9 g/t Au. Dorset # 2: exposed by trenching for 110 m along strike, two veins up to 1 m wide, western vein is the best mineralized with visible gold, galena, chalcopyrite, sphalerite and bornite; grab samples assays up to 167.0 g/t Au and channel samples assays up to 41.6 g/t Au over 1.5 m. Dorset # 3: quartz vein with minor disseminated pyrite and chalcopyrite, up to 0.8 m wide, and exposed by trenching along a 70 m along strike length; grab samples up to 15.87 g/t Au.

<https://gis.gov.nl.ca/mods/ModsCard.asp?NMINOString?temp=n&NMINOString=012H/16/Au%20014>

Powerline

Grab samples returned highs of 13.3, 13.7, 8.3, 2.46, and 5.3 g/t Au. Detailed channel sampling returned highs of 1.6 g/t Au over 1.6m and 1.39 g/t Au over 1.15m (MacDougall, 1990).

<https://gis.gov.nl.ca/mods/ModsCard.asp?NMINOString?temp=n&NMINOString=012H/16/Au%20015>

Braz

Initial grab samples returned highs of 314.0, 40.0, 31.4, 21.2, 19.2, and 14.8 g/t Au. Channel samples across the vein returned 9.5 g/t Au over 0.4 m; 5.7 g/t Au over 0.5m and 1.2 g/t Au over 0.65m. Best combined averages including vein and mineralized wall rock include 5.8 g/t Au over 1.9 m; 3.1 g/t Au over 2.0 m and 2.5 g/t Au over 1.5m (MacDougall, 1990).

<https://gis.gov.nl.ca/mods/ModsCard.asp?NMINOString?temp=n&NMINOString=012H/16/Au%20011>

Dorset Extension

Detailed channel sampling across the zone returned a combined assay of 56.0 g/t Au over 2.5 m. Two drill holes (DDH-88-9, 10) tested the Dorset #2 vein south along strike. The vein remains narrow (<0.5m) and returned low Au values up to 2.32 g/t Au over 0.5m.

<https://gis.gov.nl.ca/mods/ModsCard.asp?NMINOString?temp=n&NMINOString=012H/16/Au%20013>

☒ Historic rock samples and grab samples mentioned in this presentation are selective by nature and are unlikely to represent average grades of the property. The reported drill intercepts mentioned in this presentation are intersected lengths and not true widths.